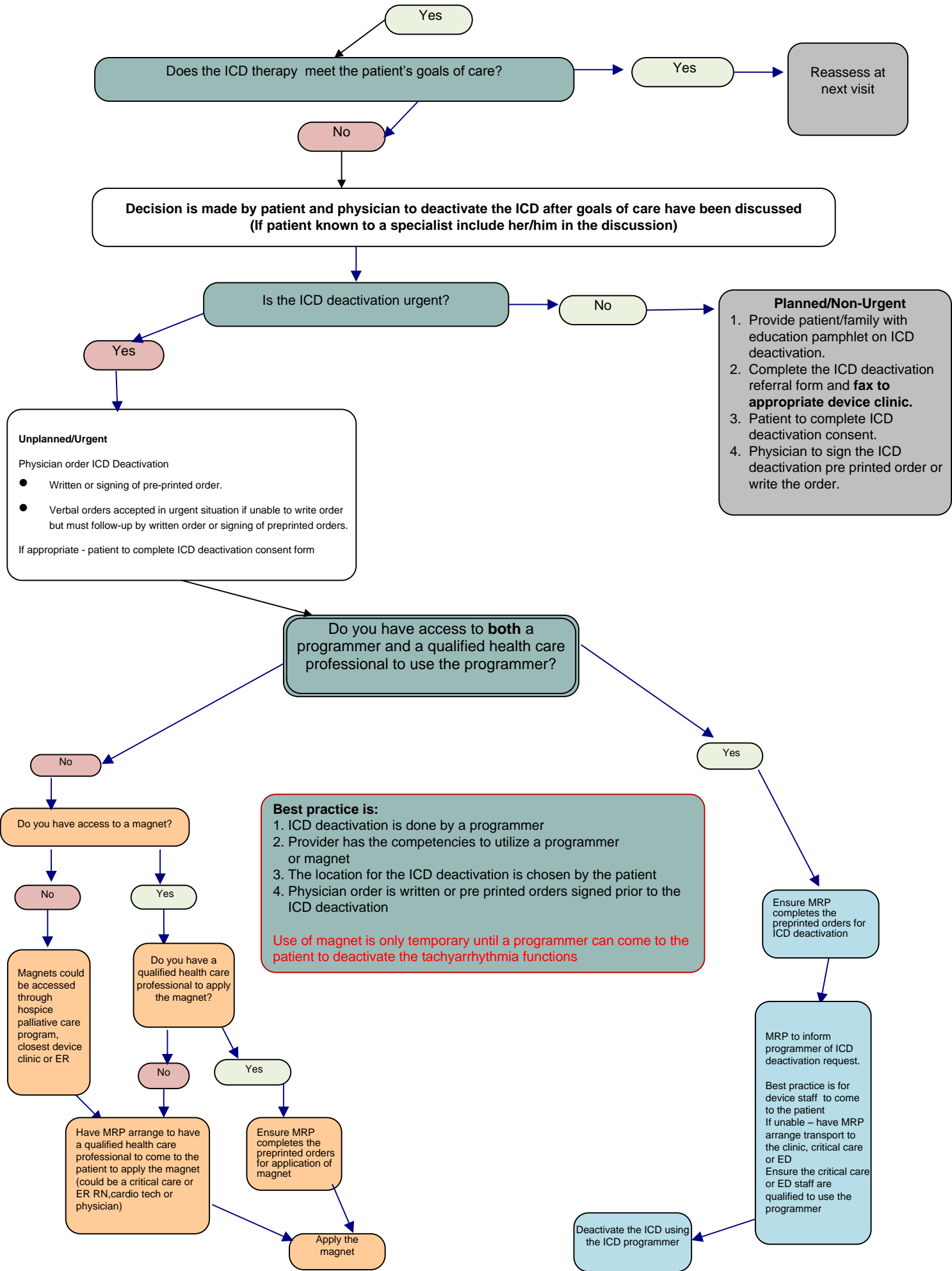


## Final- Provincial Heart Failure End of Life Implantable Cardioverter Defibrillator (ICD) Deactivation Decision Algorithm

**Questions to ask yourself to help you determine if a patient is transitioning to an EOL trajectory which should trigger the use of this algorithm**

- 1) Surprise Question- In the next 6 months, would I be surprised to hear this individual had died?
- 2) Has the patient made a choice for comfort measures or is the patient in need of supportive palliative care? (e.g. non a transplant candidate, VAD at end of life)
- 3) Does the patient have at least 2 of the following clinical indicators? a) NYHA III or IV, b)Thought to be in last year of life, c) Repeated HF hospitalizations
- 4) Is the patient having difficult physical or psychological symptoms despite optimal therapy?

(Adapted from the Gold Standards Framework, 2008)



**Documentation: It is highly recommended that a written order or signing of a pre printed order occur prior to deactivation.**  
In an emergency situation whereby a written order cannot be provided a verbal order will be accepted but it must be accompanied by a written or signed preprinted order.  
The details of the advance care planning discussion and subsequent deactivation must be recorded by the physician in the patient's progress notes and by other health care providers in the nursing notes.

